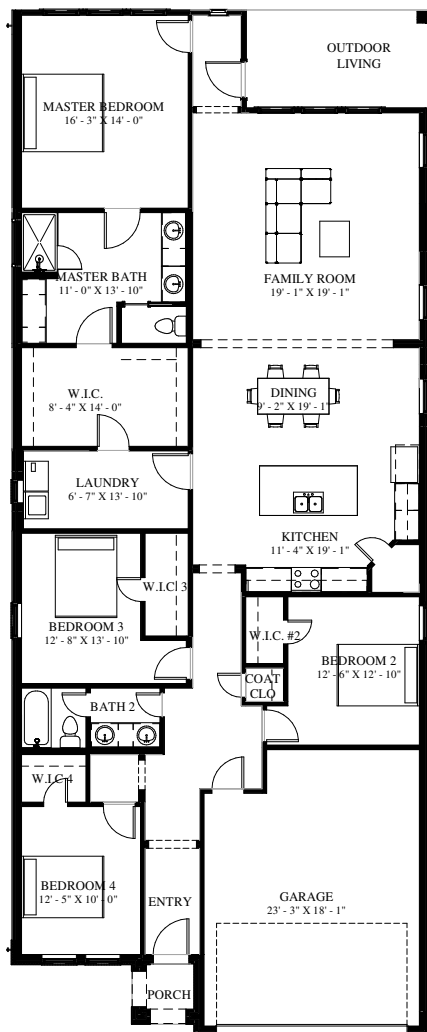
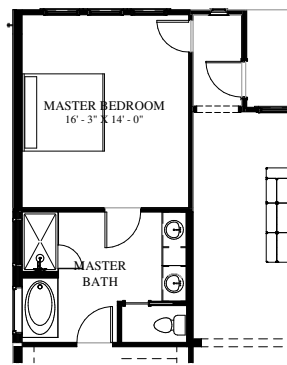


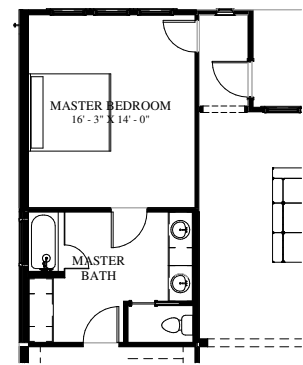
FRONT ELEVATION - PLAN 2277 A



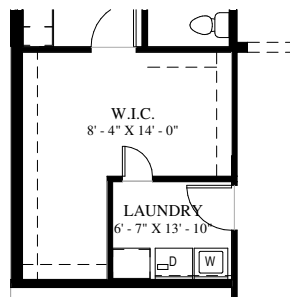
FLOOR PLAN



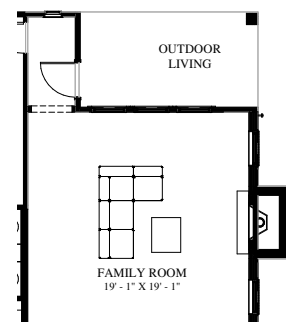
MASTER BATH
WITH
GARDEN TUB
AND SHOWER



MASTER BATH
WITH TUB/
SHOWER
COMBO



UTILITY
ROOM
OPTION



FAMILY ROOM
WITH
FIREPLACE

OPTIONS

FOOTAGE:

TOTAL LIVING:	2277	SQ/FT
GARAGE:	423	SQ/FT
PORCHES:	149	SQ/FT
TOTAL COVERED:	2849	SQ/FT

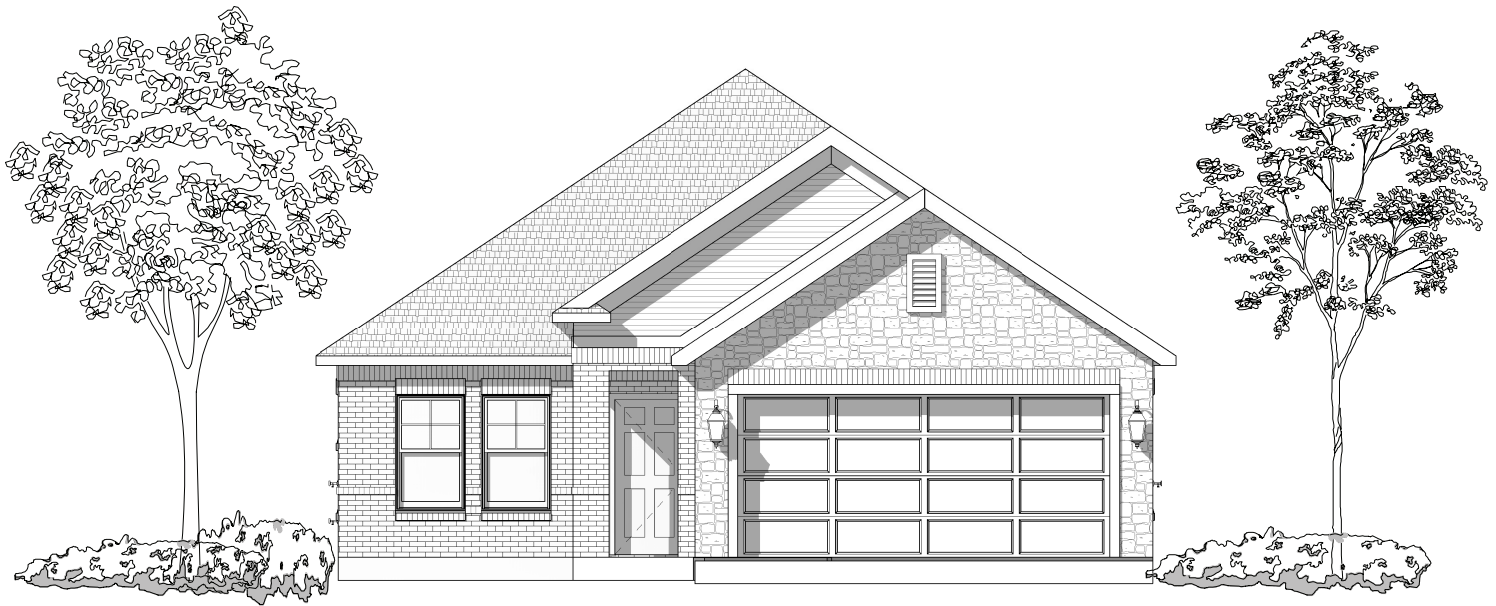
WIDTH: 35' - 0"
DEPTH: 86' - 0"

"Architectural dimensions shown are nominal exterior dimensions, room sizes, window placements and other dimensions may vary from these drawings. This brochure is for illustration purposes only. They are not part of a legal contract. Bilmar Homes reserves the right to change product, features, brand names, architectural design and details without notice."

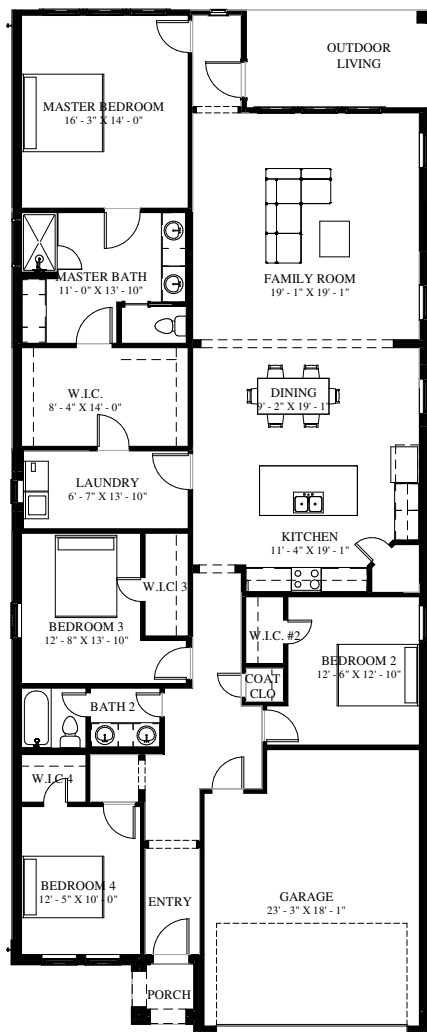
4 BEDROOM - 2 BATH - 2 CAR GARAGE

PLAN: 2277 A

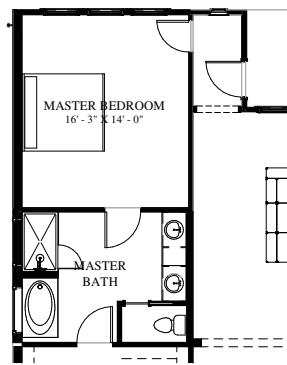
**BILMAR
HOMES**



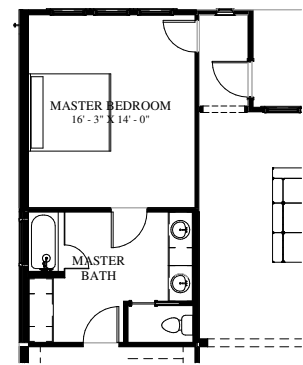
FRONT ELEVATION - PLAN 2277 A+



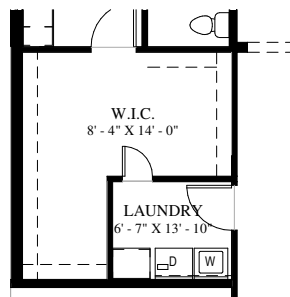
FLOOR PLAN



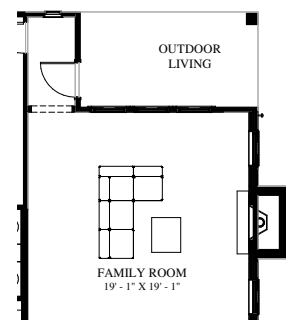
MASTER BATH
WITH
GARDEN TUB
AND SHOWER



MASTER BATH
WITH TUB/
SHOWER
COMBO



UTILITY
ROOM
OPTION



FAMILY ROOM
WITH
FIREPLACE

OPTIONS

FOOTAGE:

TOTAL LIVING:	2277	SQ/FT
GARAGE:	423	SQ/FT
PORCHES:	149	SQ/FT
TOTAL COVERED:	2849	SQ/FT

WIDTH: 35' - 0"

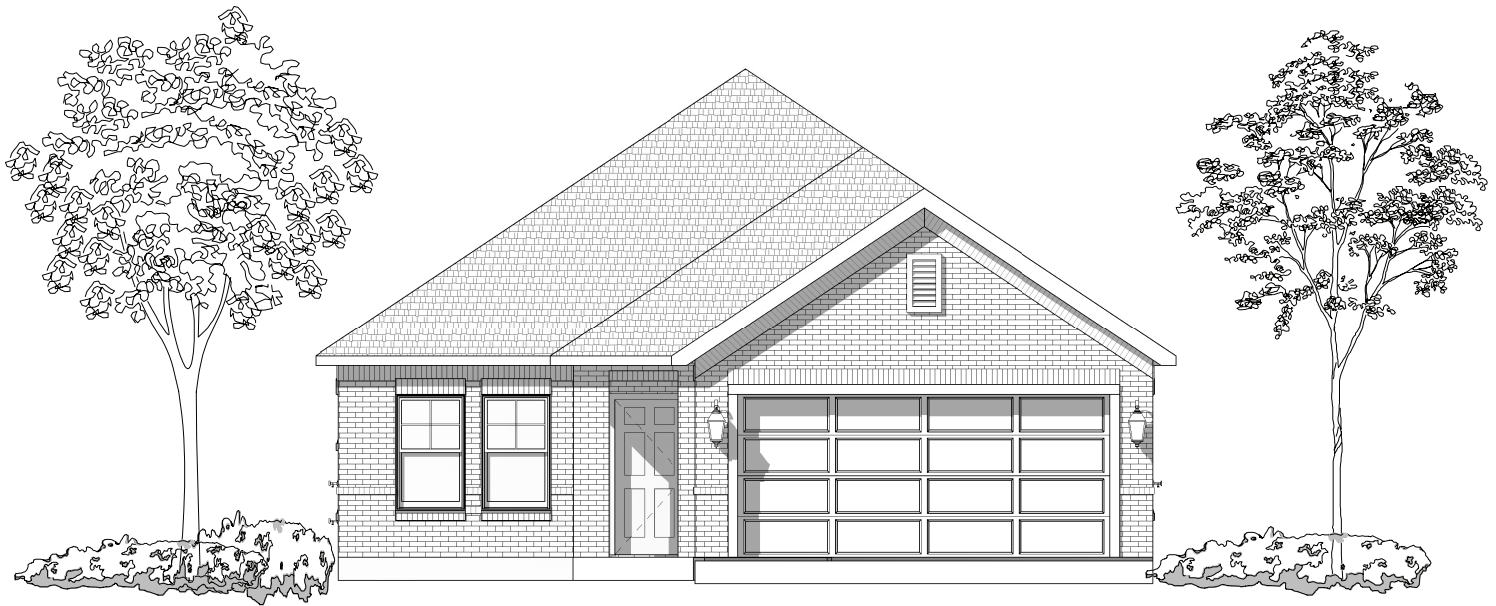
DEPTH: 86' - 0"

"Architectural dimensions shown are nominal exterior dimensions, room sizes, window placements and other dimensions may vary from these drawings. This brochure is for illustration purposes only. They are not part of a legal contract. Bilmar Homes reserves the right to change product, features, brand names, architectural design and details without notice."

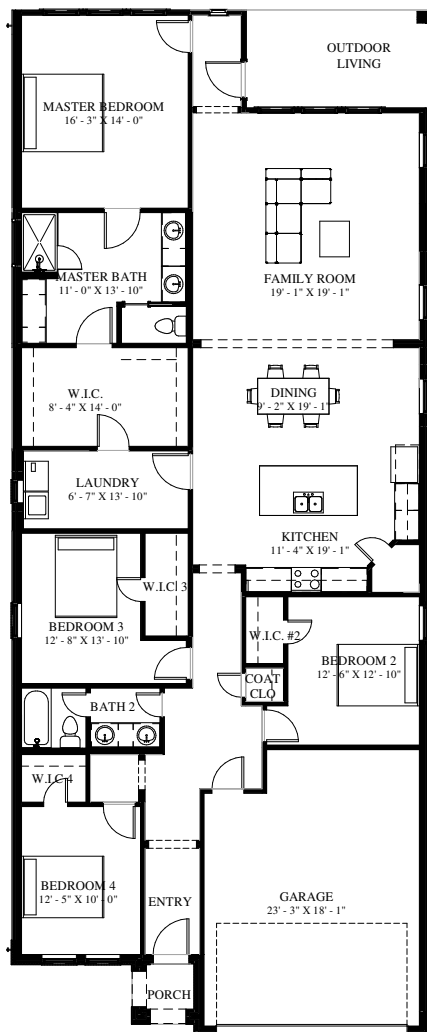
4 BEDROOM - 2 BATH - 2 CAR GARAGE

**BILMAR
HOMES**

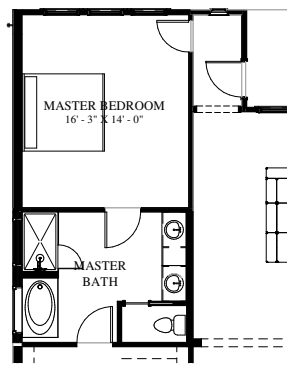
PLAN: 2277 A+



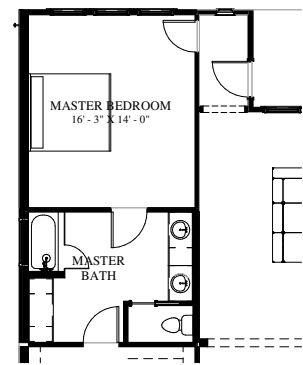
FRONT ELEVATION - PLAN 2277 B



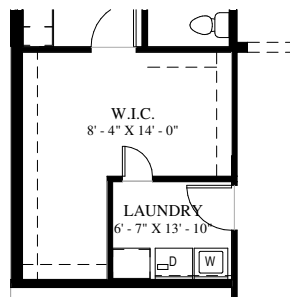
FLOOR PLAN



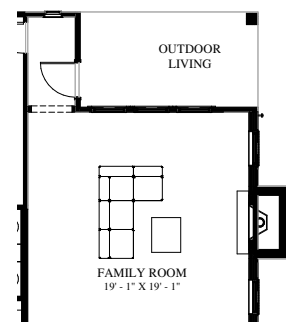
MASTER BATH
WITH
GARDEN TUB
AND SHOWER



MASTER BATH
WITH TUB/
SHOWER
COMBO



UTILITY
ROOM
OPTION



FAMILY ROOM
WITH
FIREPLACE

OPTIONS

FOOTAGE:

TOTAL LIVING:	2277	SQ/FT
GARAGE:	423	SQ/FT
PORCHES:	149	SQ/FT
TOTAL COVERED:	2849	SQ/FT

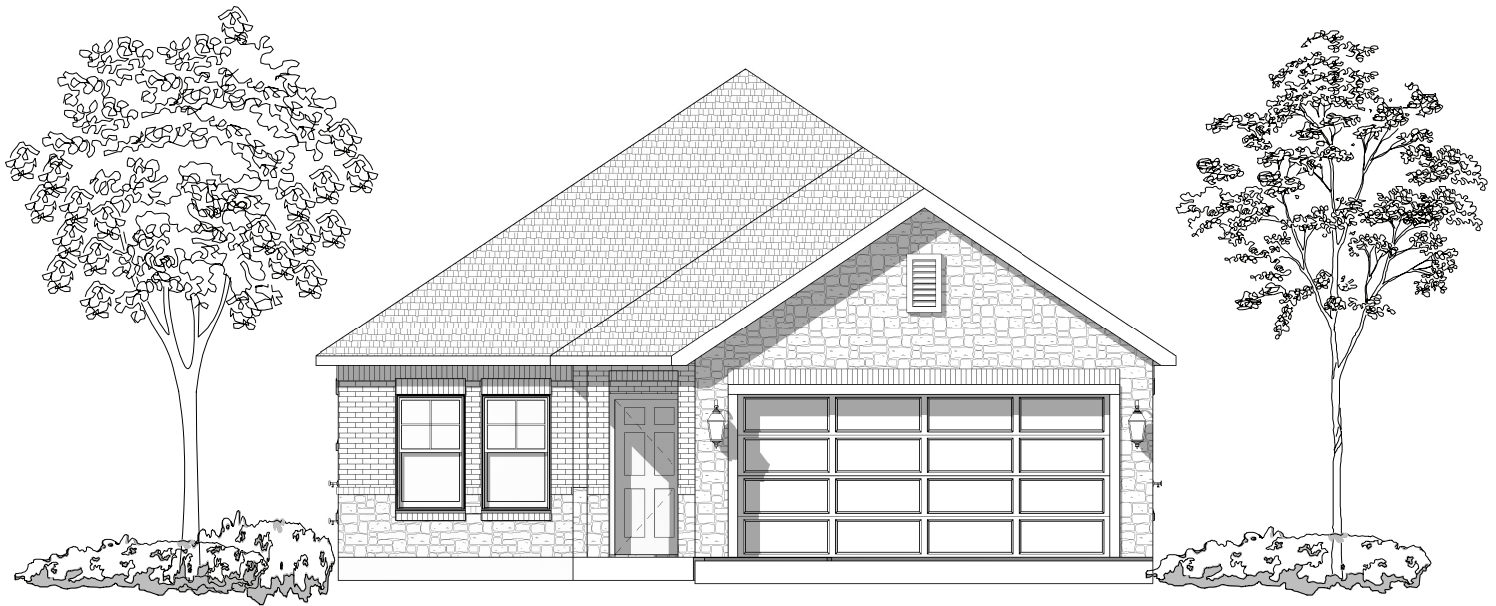
WIDTH: 35' - 0"
DEPTH: 86' - 0"

"Architectural dimensions shown are nominal exterior dimensions, room sizes, window placements and other dimensions may vary from these drawings. This brochure is for illustration purposes only. They are not part of a legal contract. Bilmar Homes reserves the right to change product, features, brand names, architectural design and details without notice."

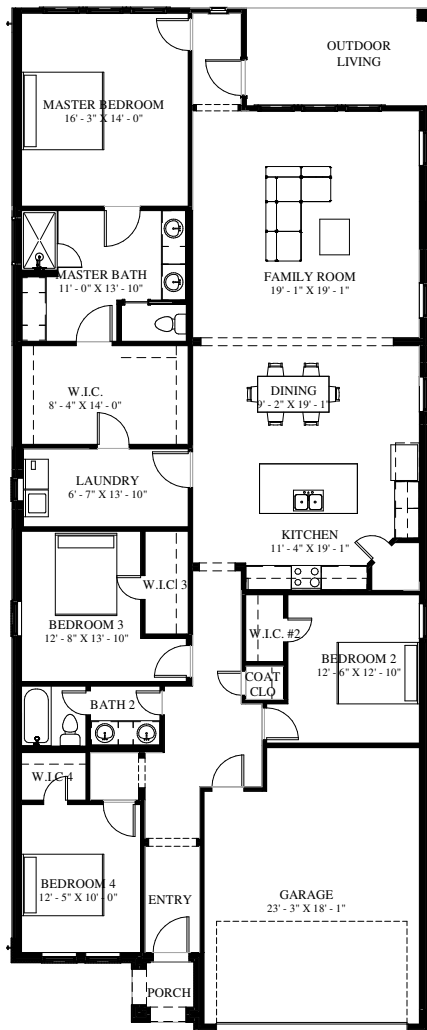
4 BEDROOM - 2 BATH - 2 CAR GARAGE

PLAN: 2277 B

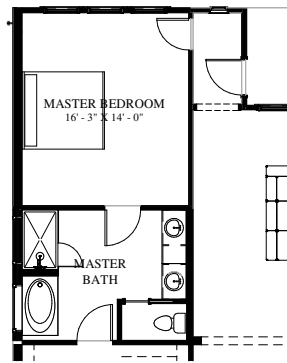
**BILMAR
HOMES**



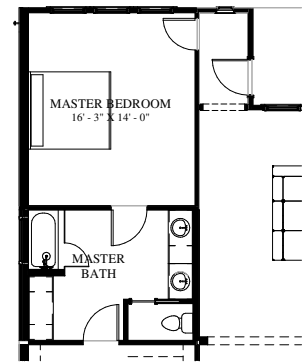
FRONT ELEVATION - PLAN 2277 B+



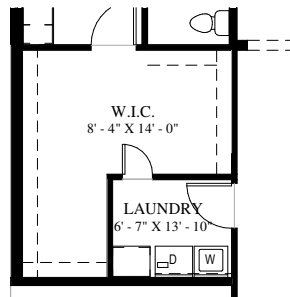
FLOOR PLAN



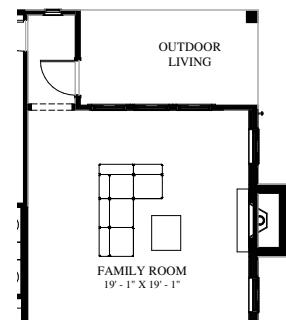
MASTER BATH
WITH
GARDEN TUB
AND SHOWER



MASTER BATH
WITH TUB/
SHOWER
COMBO



UTILITY
ROOM
OPTION



FAMILY ROOM
WITH
FIREPLACE

OPTIONS

FOOTAGE:

TOTAL LIVING:	2277	SQ/FT
GARAGE:	423	SQ/FT
PORCHES:	149	SQ/FT
TOTAL COVERED:	2849	SQ/FT

WIDTH: 35' - 0"

DEPTH: 86' - 0"

"Architectural dimensions shown are nominal exterior dimensions, room sizes, window placements and other dimensions may vary from these drawings. This brochure is for illustration purposes only. They are not part of a legal contract. Bilmar Homes reserves the right to change product, features, brand names, architectural design and details without notice."

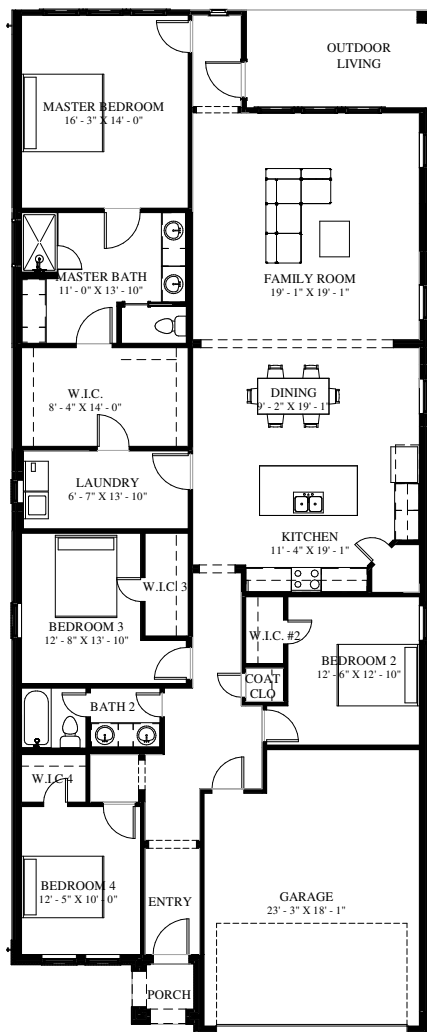
4 BEDROOM - 2 BATH - 2 CAR GARAGE

**BILMAR
HOMES**

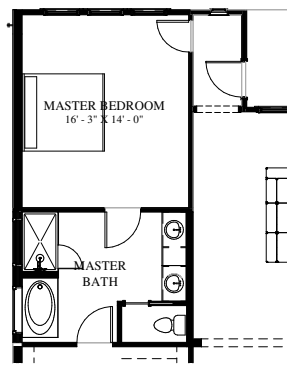
PLAN: 2277 B+



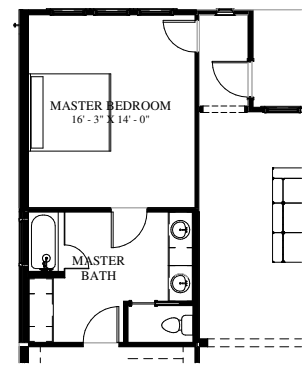
FRONT ELEVATION - PLAN 2277 C



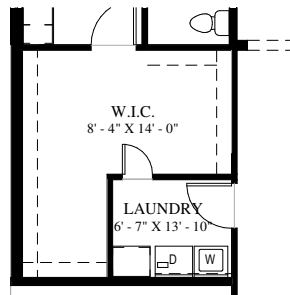
FLOOR PLAN



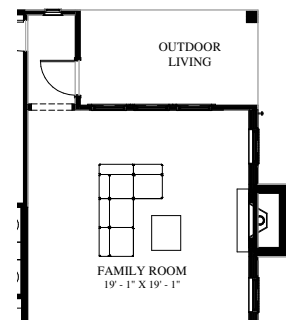
MASTER BATH
WITH
GARDEN TUB
AND SHOWER



MASTER BATH
WITH TUB/
SHOWER
COMBO



UTILITY
ROOM
OPTION



FAMILY ROOM
WITH
FIREPLACE

OPTIONS

FOOTAGE:

TOTAL LIVING:	2277	SQ/FT
GARAGE:	423	SQ/FT
PORCHES:	149	SQ/FT
TOTAL COVERED:	2849	SQ/FT

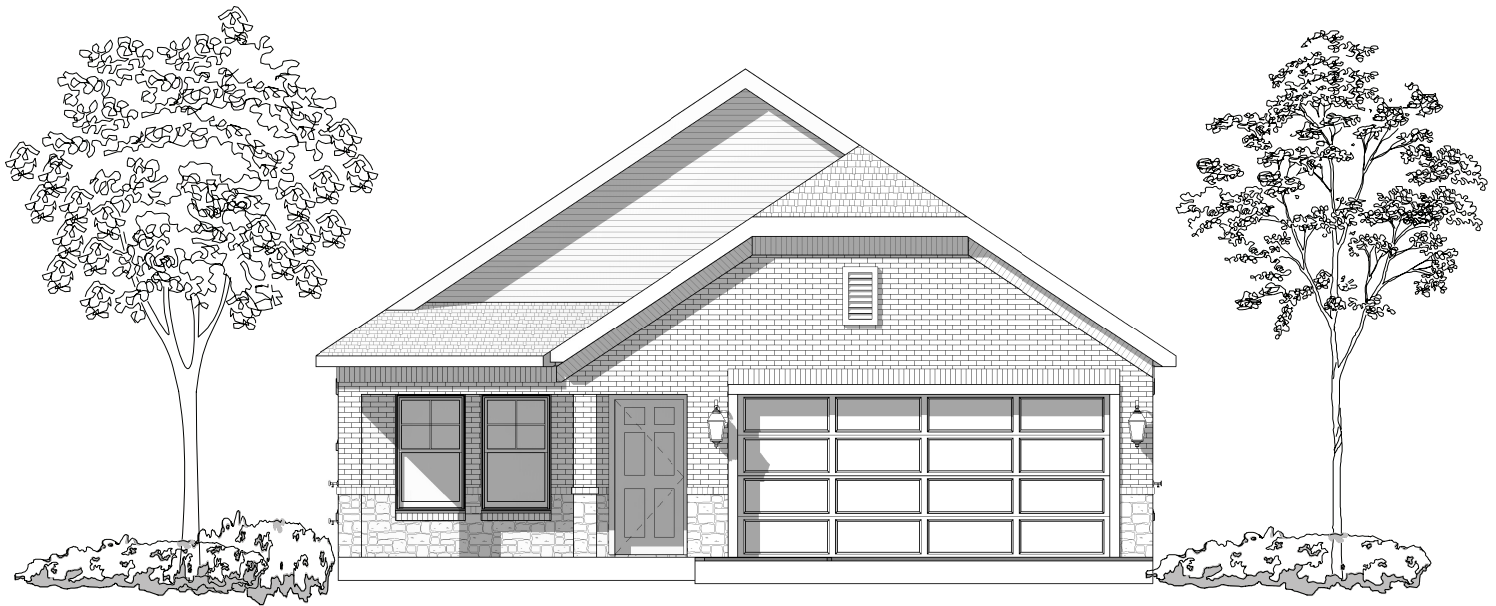
WIDTH: 35' - 0"
DEPTH: 86' - 0"

"Architectural dimensions shown are nominal exterior dimensions, room sizes, window placements and other dimensions may vary from these drawings. This brochure is for illustration purposes only. They are not part of a legal contract. Bilmar Homes reserves the right to change product, features, brand names, architectural design and details without notice."

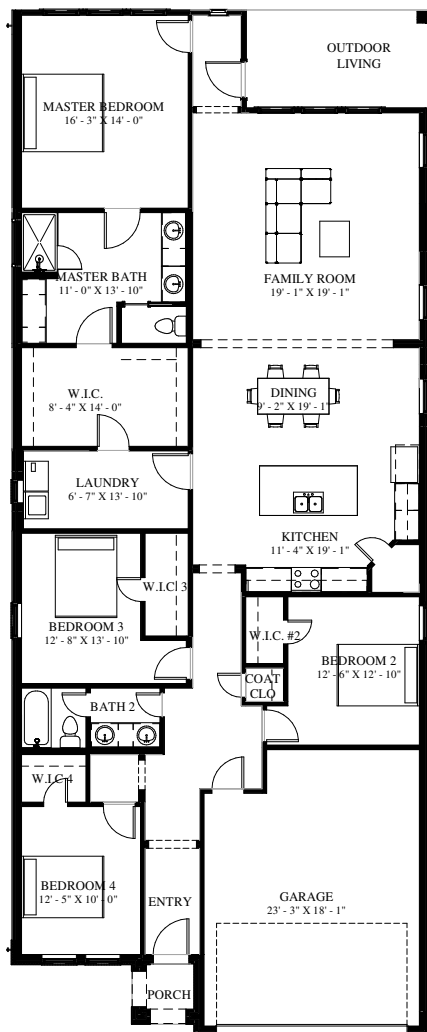
4 BEDROOM - 2 BATH - 2 CAR GARAGE

PLAN: 2277 C

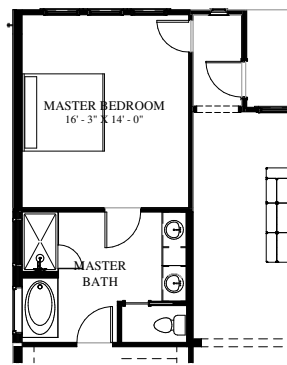
**BILMAR
HOMES**



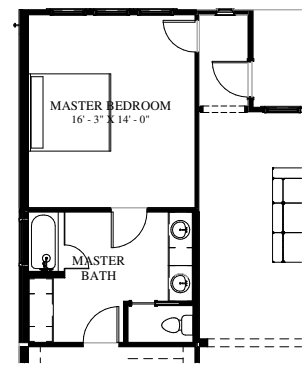
FRONT ELEVATION - PLAN 2277 C+



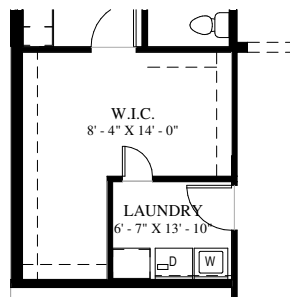
FLOOR PLAN



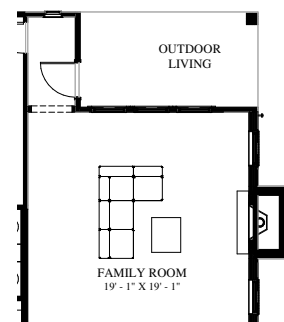
MASTER BATH
WITH
GARDEN TUB
AND SHOWER



MASTER BATH
WITH TUB/
SHOWER
COMBO



UTILITY
ROOM
OPTION



FAMILY ROOM
WITH
FIREPLACE

OPTIONS

FOOTAGE:

TOTAL LIVING:	2277	SQ/FT
GARAGE:	423	SQ/FT
PORCHES:	149	SQ/FT
TOTAL COVERED:	2849	SQ/FT

WIDTH: 35' - 0"
DEPTH: 86' - 0"

"Architectural dimensions shown are nominal exterior dimensions, room sizes, window placements and other dimensions may vary from these drawings. This brochure is for illustration purposes only. They are not part of a legal contract. Bilmar Homes reserves the right to change product, features, brand names, architectural design and details without notice."

4 BEDROOM - 2 BATH - 2 CAR GARAGE

**BILMAR
HOMES**

PLAN: 2277 C+