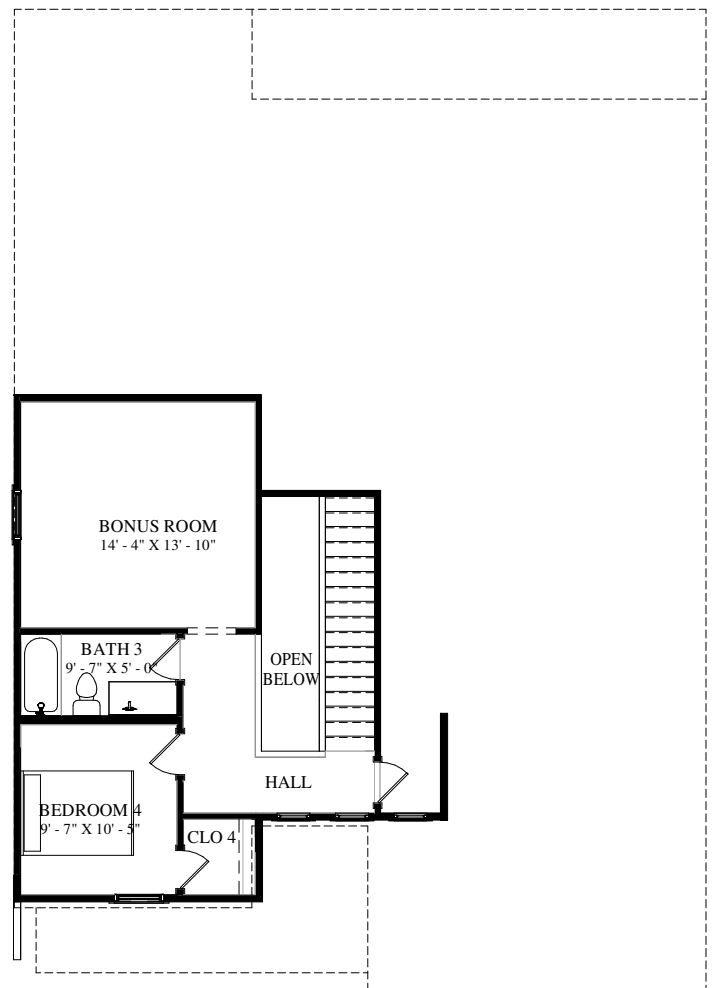
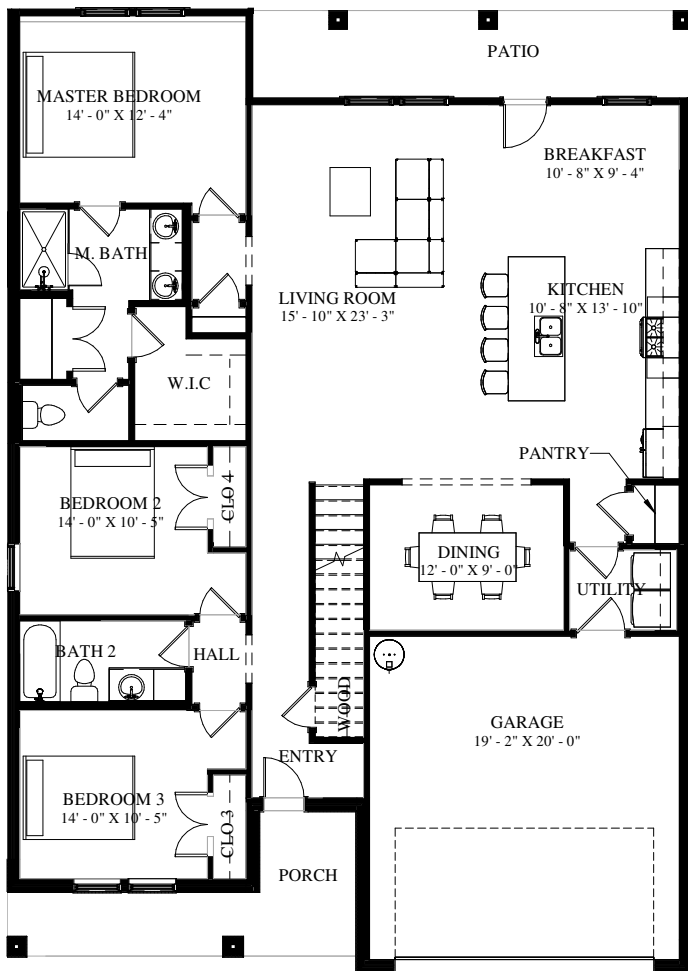




FRONT ELEVATION - PLAN 2250 A



FLOOR PLAN

FOOTAGE:

TOTAL LIVING:	2250	SQ/FT
GARAGE:	405	SQ/FT
PORCHES:	264	SQ/FT
TOTAL COVERED:	2919	SQ/FT

WIDTH: 42' - 5"
DEPTH: 59' - 6 1/2"



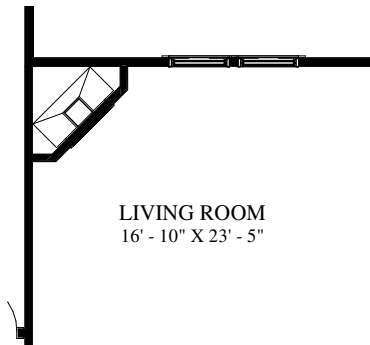
"Architectural dimensions shown are nominal exterior dimensions, room sizes, window placements and other dimensions may vary from these drawings. This brochure is for illustration purposes only. They are not part of a legal contract. Bilmar Homes reserves the right to change product, features, brand names, architectural design and details without notice."

5 BEDROOM - 2 BATH - 2 CAR GARAGE

PLAN: 2250 A

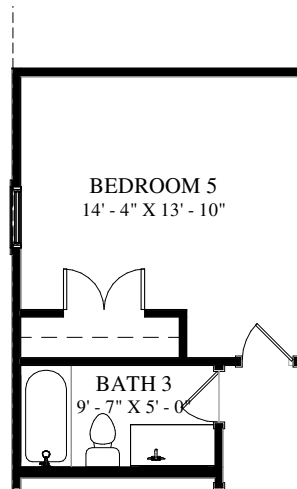


FRONT ELEVATION - PLAN 2250 A



LIVING ROOM
16' - 10" X 23' - 5"

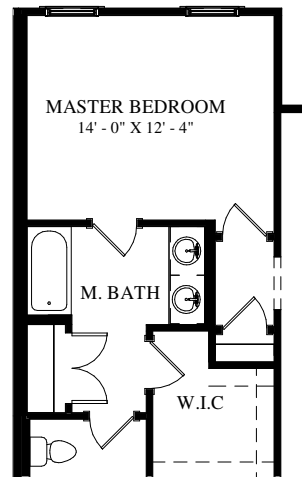
FAMILY ROOM
WITH
FIREPLACE



BEDROOM 5
14' - 4" X 13' - 10"

BATH 3
9' - 7" X 5' - 0"

BEDROOM 5
OPTION

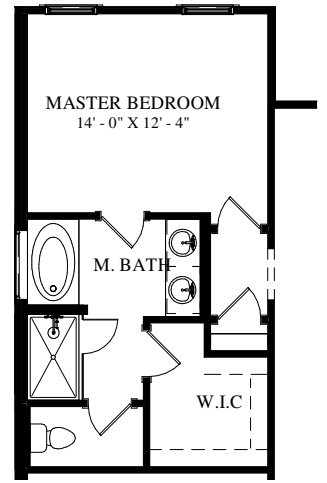


MASTER BEDROOM
14' - 0" X 12' - 4"

M. BATH

W.I.C

MASTER BATH
WITH TUB/
SHOWER
COMBO



MASTER BEDROOM
14' - 0" X 12' - 4"

M. BATH

W.I.C

MASTER BATH
WITH
GARDEN TUB
AND SHOWER

OPTIONS

FOOTAGE:

TOTAL LIVING:	2250	SQ/FT
GARAGE:	405	SQ/FT
PORCHES:	264	SQ/FT
TOTAL COVERED:	2919	SQ/FT

WIDTH: 42' - 5"

DEPTH: 59' - 6 1/2"



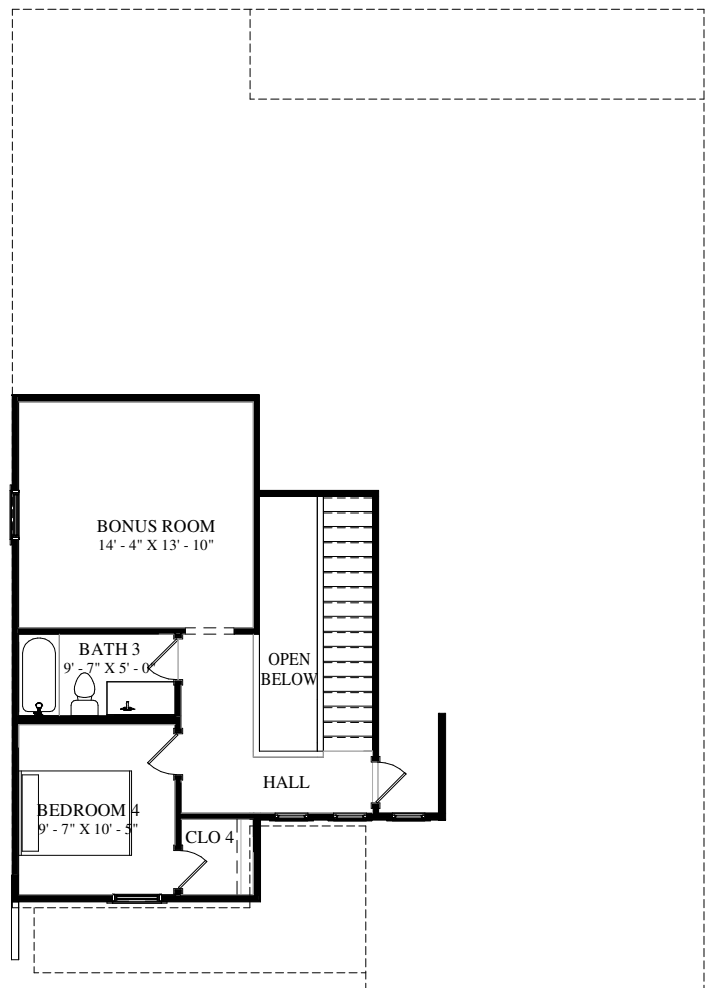
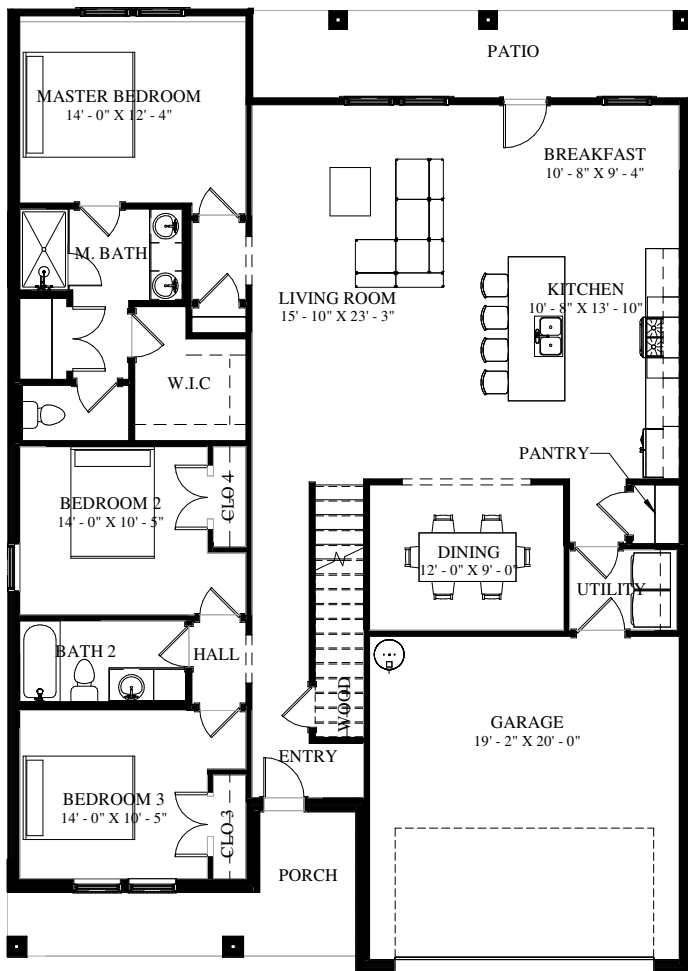
"Architectural dimensions shown are nominal exterior dimensions, room sizes, window placements and other dimensions may vary from these drawings. This brochure is for illustration purposes only. They are not part of a legal contract. Bilmar Homes reserves the right to change product, features, brand names, architectural design and details without notice."

5 BEDROOM - 2 BATH - 2 CAR GARAGE

PLAN: 2250 A



FRONT ELEVATION - PLAN 2250 A+



FLOOR PLAN

FOOTAGE:

TOTAL LIVING:	2250	SQ/FT
GARAGE:	405	SQ/FT
PORCHES:	264	SQ/FT
TOTAL COVERED:	2919	SQ/FT

WIDTH: 42' - 5"
DEPTH: 59' - 6 1/2"



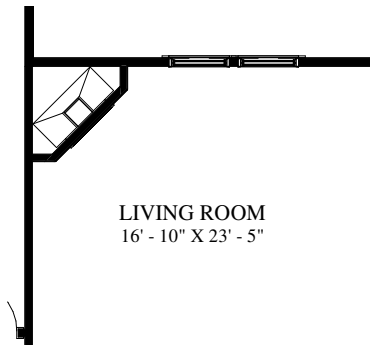
"Architectural dimensions shown are nominal exterior dimensions, room sizes, window placements and other dimensions may vary from these drawings. This brochure is for illustration purposes only. They are not part of a legal contract. Bilmar Homes reserves the right to change product, features, brand names, architectural design and details without notice."

5 BEDROOM - 2 BATH - 2 CAR GARAGE

PLAN: 2250 A+

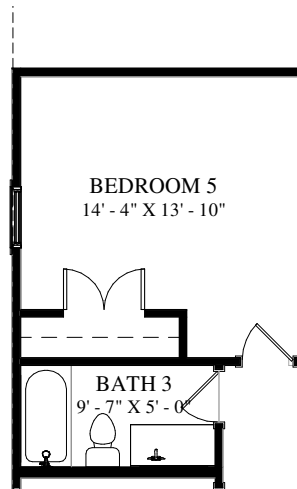


FRONT ELEVATION - PLAN 2250 A+



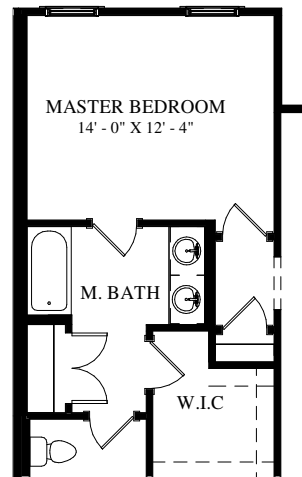
LIVING ROOM
16' - 10" X 23' - 5"

FAMILY ROOM
WITH
FIREPLACE



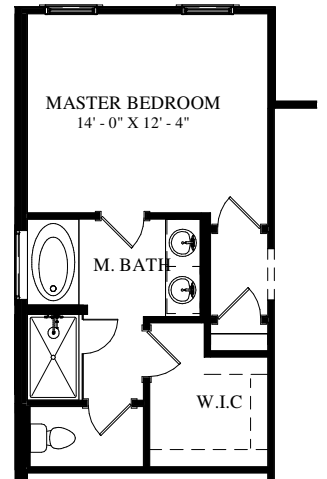
BEDROOM 5
14' - 4" X 13' - 10"

BEDROOM 5
OPTION



MASTER BEDROOM
14' - 0" X 12' - 4"

MASTER BATH
WITH TUB/
SHOWER
COMBO



MASTER BEDROOM
14' - 0" X 12' - 4"

MASTER BATH
WITH
GARDEN TUB
AND SHOWER

OPTIONS

FOOTAGE:

TOTAL LIVING:	2250	SQ/FT
GARAGE:	405	SQ/FT
PORCHES:	264	SQ/FT
TOTAL COVERED:	2919	SQ/FT

WIDTH: 42' - 5"
DEPTH: 59' - 6 1/2"



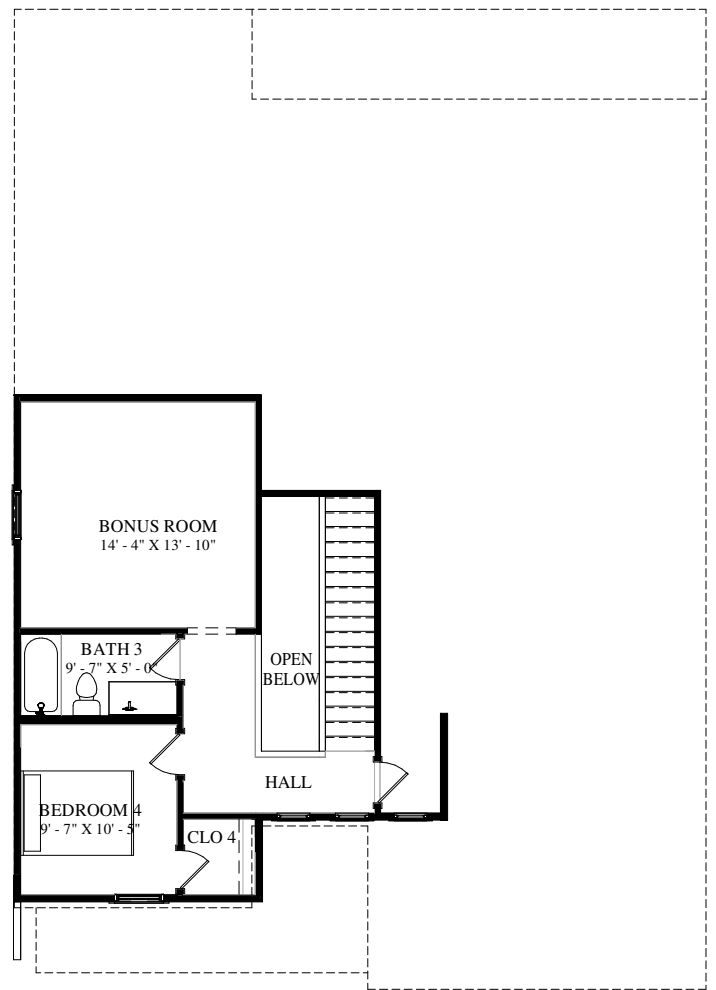
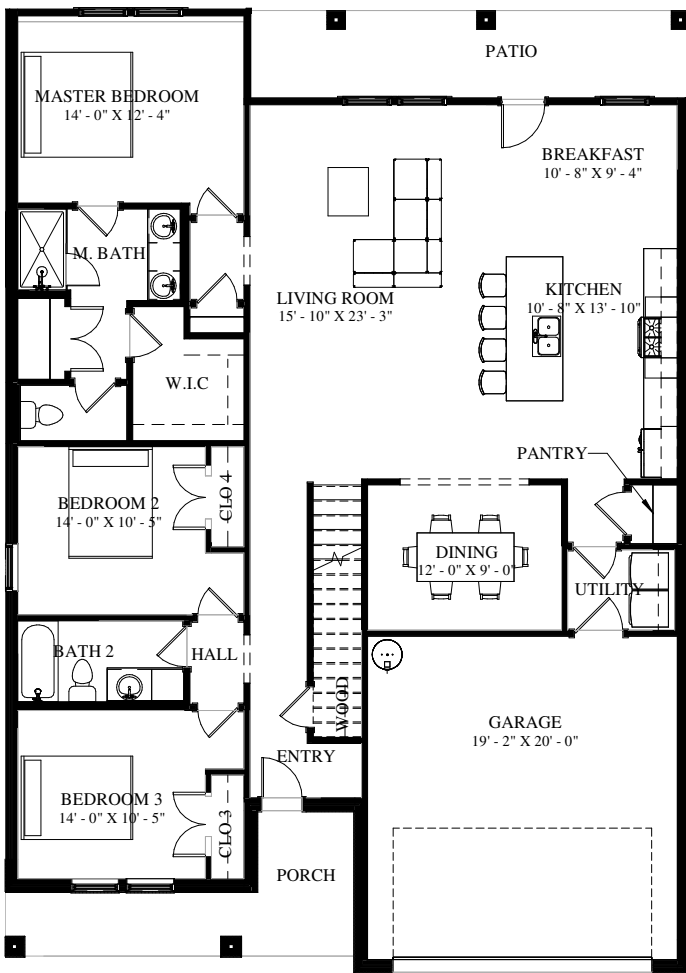
"Architectural dimensions shown are nominal exterior dimensions, room sizes, window placements and other dimensions may vary from these drawings. This brochure is for illustration purposes only. They are not part of a legal contract. Bilmar Homes reserves the right to change product, features, brand names, architectural design and details without notice."

5 BEDROOM - 2 BATH - 2 CAR GARAGE

PLAN: 2250 A+



FRONT ELEVATION - PLAN 2250 B



FLOOR PLAN

FOOTAGE:

TOTAL LIVING:	2250	SQ/FT
GARAGE:	405	SQ/FT
PORCHES:	264	SQ/FT
TOTAL COVERED:	2919	SQ/FT

WIDTH: 42' - 5"
DEPTH: 59' - 6 1/2"



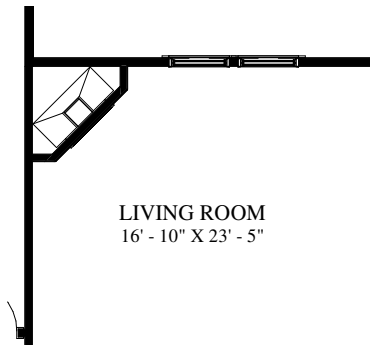
"Architectural dimensions shown are nominal exterior dimensions, room sizes, window placements and other dimensions may vary from these drawings. This brochure is for illustration purposes only. They are not part of a legal contract. Bilmar Homes reserves the right to change product, features, brand names, architectural design and details without notice."

5 BEDROOM - 2 BATH - 2 CAR GARAGE

PLAN: 2250 B

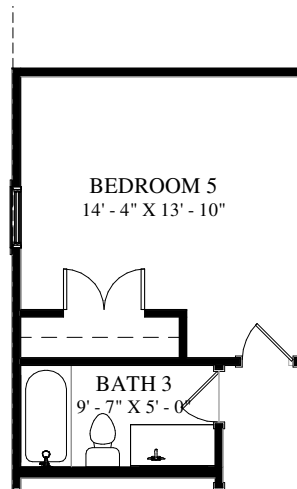


FRONT ELEVATION - PLAN 2250 B



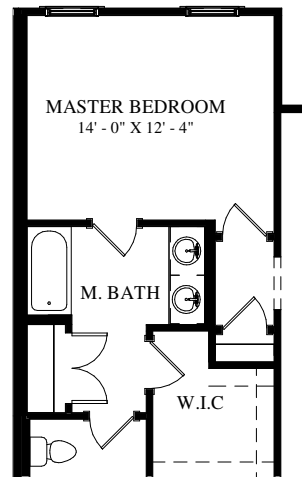
LIVING ROOM
16' - 10" X 23' - 5"

FAMILY ROOM
WITH
FIREPLACE



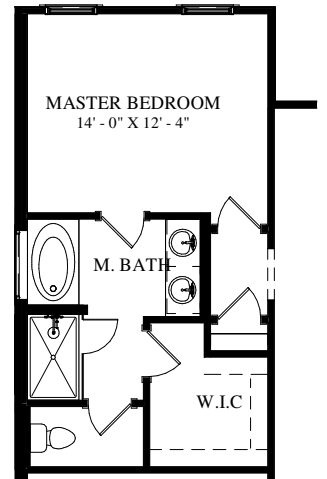
BEDROOM 5
14' - 4" X 13' - 10"

BEDROOM 5
OPTION



MASTER BEDROOM
14' - 0" X 12' - 4"

MASTER BATH
WITH TUB/
SHOWER
COMBO



MASTER BEDROOM
14' - 0" X 12' - 4"

MASTER BATH
WITH
GARDEN TUB
AND SHOWER

OPTIONS

FOOTAGE:

TOTAL LIVING:	2250	SQ/FT
GARAGE:	405	SQ/FT
PORCHES:	264	SQ/FT
TOTAL COVERED:	2919	SQ/FT

WIDTH: 42' - 5"
DEPTH: 59' - 6 1/2"



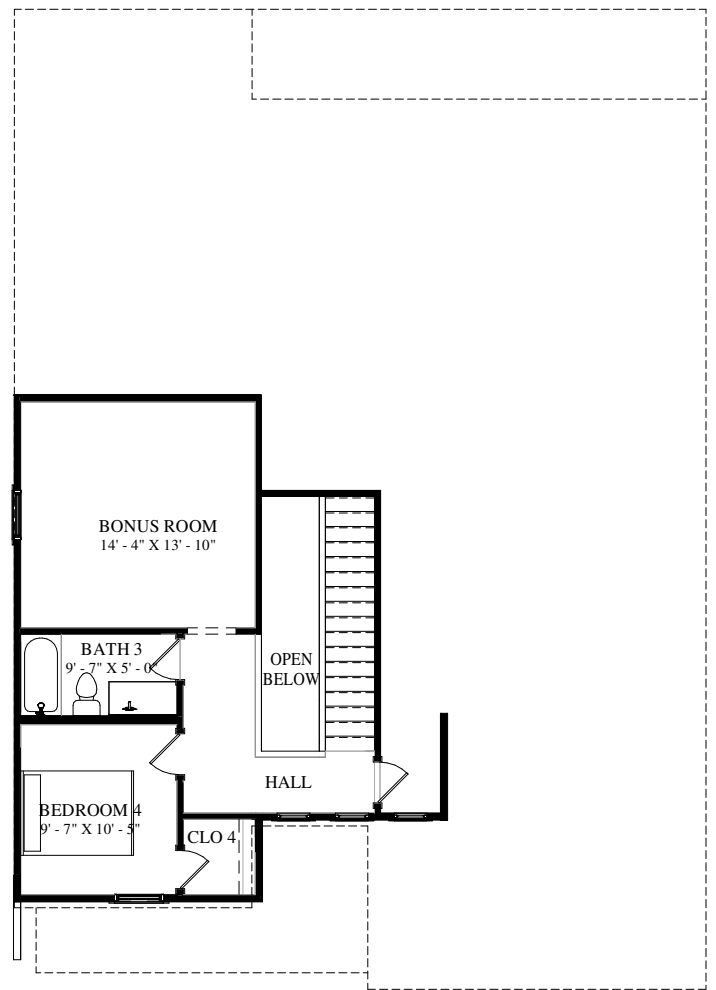
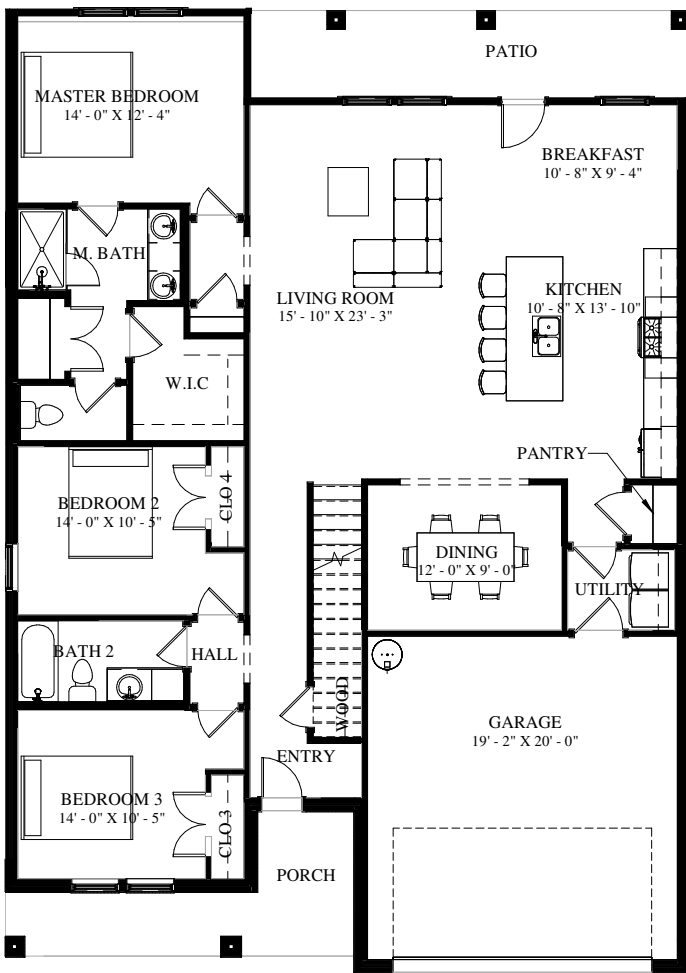
"Architectural dimensions shown are nominal exterior dimensions, room sizes, window placements and other dimensions may vary from these drawings. This brochure is for illustration purposes only. They are not part of a legal contract. Bilmar Homes reserves the right to change product, features, brand names, architectural design and details without notice."

5 BEDROOM - 2 BATH - 2 CAR GARAGE

PLAN: 2250 B



FRONT ELEVATION - PLAN 2250 B+



FLOOR PLAN

FOOTAGE:

TOTAL LIVING:	2250	SQ/FT
GARAGE:	405	SQ/FT
PORCHES:	264	SQ/FT
TOTAL COVERED:	2919	SQ/FT

WIDTH: 42' - 5"
DEPTH: 59' - 6 1/2"



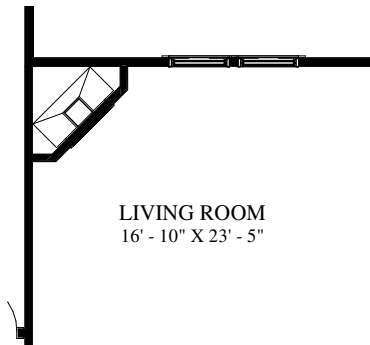
"Architectural dimensions shown are nominal exterior dimensions, room sizes, window placements and other dimensions may vary from these drawings. This brochure is for illustration purposes only. They are not part of a legal contract. Bilmar Homes reserves the right to change product, features, brand names, architectural design and details without notice."

5 BEDROOM - 2 BATH - 2 CAR GARAGE

PLAN: 2250 B+

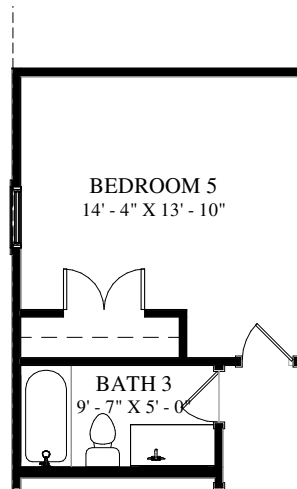


FRONT ELEVATION - PLAN 2250 B+



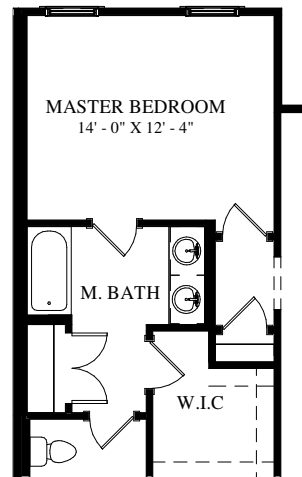
LIVING ROOM
16' - 10" X 23' - 5"

FAMILY ROOM
WITH
FIREPLACE



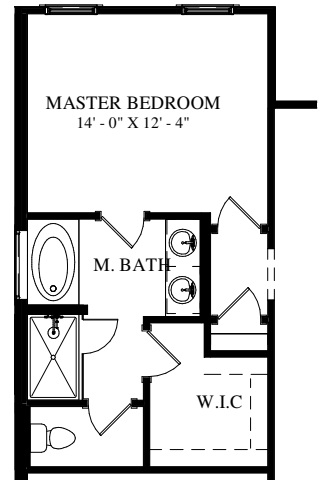
BEDROOM 5
14' - 4" X 13' - 10"

BEDROOM 5
OPTION



MASTER BEDROOM
14' - 0" X 12' - 4"

MASTER BATH
WITH TUB/
SHOWER
COMBO



MASTER BEDROOM
14' - 0" X 12' - 4"

MASTER BATH
WITH
GARDEN TUB
AND SHOWER

OPTIONS

FOOTAGE:

TOTAL LIVING:	2250	SQ/FT
GARAGE:	405	SQ/FT
PORCHES:	264	SQ/FT
TOTAL COVERED:	2919	SQ/FT

WIDTH: 42' - 5"

DEPTH: 59' - 6 1/2"



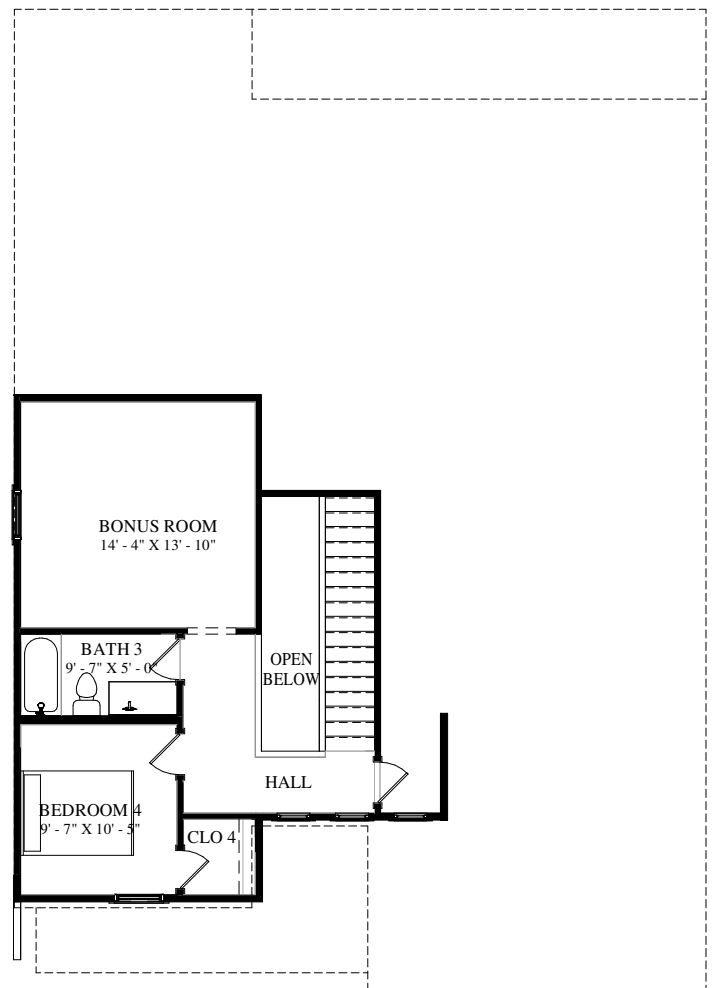
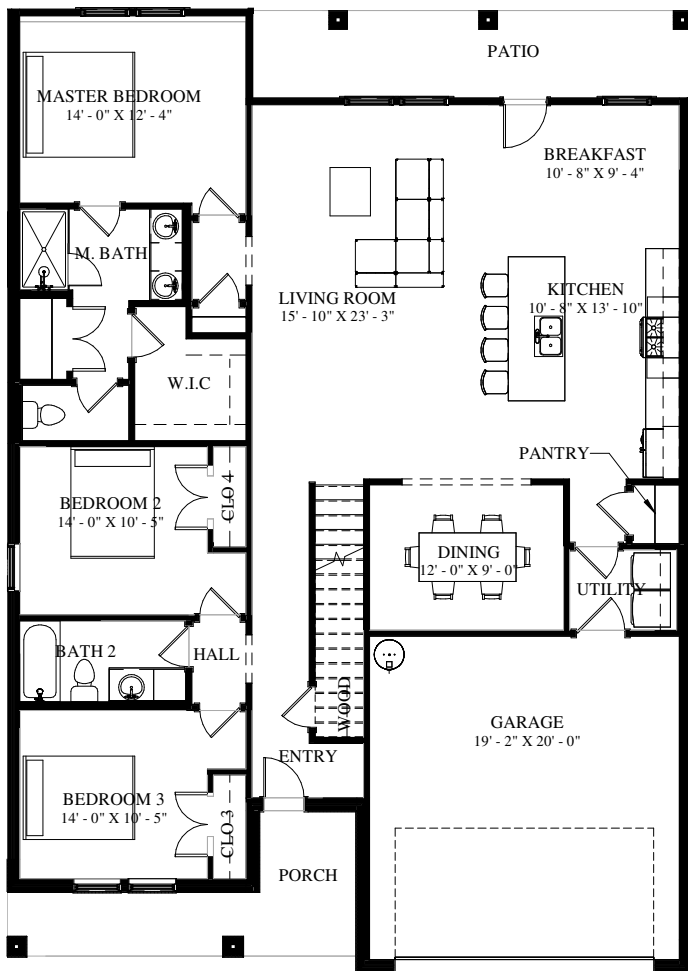
"Architectural dimensions shown are nominal exterior dimensions, room sizes, window placements and other dimensions may vary from these drawings. This brochure is for illustration purposes only. They are not part of a legal contract. Bilmar Homes reserves the right to change product, features, brand names, architectural design and details without notice."

5 BEDROOM - 2 BATH - 2 CAR GARAGE

PLAN: 2250 B+



FRONT ELEVATION - PLAN 2250 C



FLOOR PLAN

FOOTAGE:

TOTAL LIVING:	2250	SQ/FT
GARAGE:	405	SQ/FT
PORCHES:	264	SQ/FT
TOTAL COVERED:	2919	SQ/FT

WIDTH: 42' - 5"
DEPTH: 59' - 6 1/2"



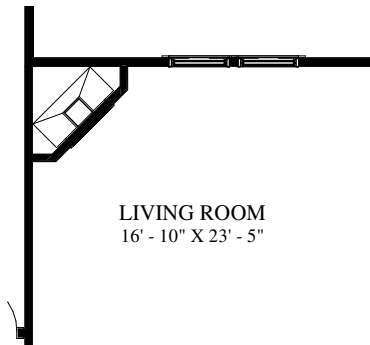
"Architectural dimensions shown are nominal exterior dimensions, room sizes, window placements and other dimensions may vary from these drawings. This brochure is for illustration purposes only. They are not part of a legal contract. Bilmar Homes reserves the right to change product, features, brand names, architectural design and details without notice."

5 BEDROOM - 2 BATH - 2 CAR GARAGE

PLAN: 2250 C

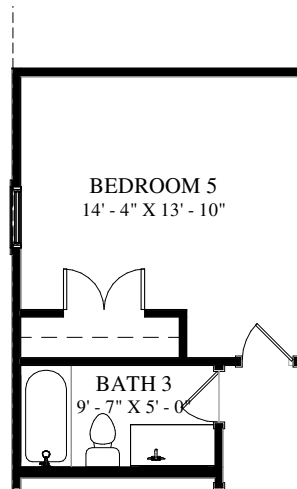


FRONT ELEVATION - PLAN 2250 C



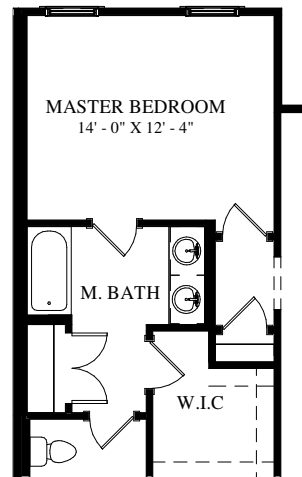
LIVING ROOM
16' - 10" X 23' - 5"

FAMILY ROOM
WITH
FIREPLACE



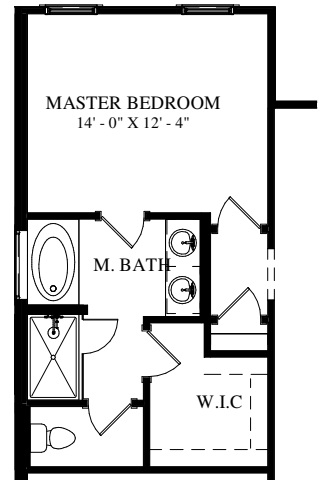
BEDROOM 5
14' - 4" X 13' - 10"

BEDROOM 5
OPTION



MASTER BEDROOM
14' - 0" X 12' - 4"

MASTER BATH
WITH TUB/
SHOWER
COMBO



MASTER BEDROOM
14' - 0" X 12' - 4"

MASTER BATH
WITH
GARDEN TUB
AND SHOWER

OPTIONS

FOOTAGE:

TOTAL LIVING:	2250	SQ/FT
GARAGE:	405	SQ/FT
PORCHES:	264	SQ/FT
TOTAL COVERED:	2919	SQ/FT

WIDTH: 42' - 5"
DEPTH: 59' - 6 1/2"



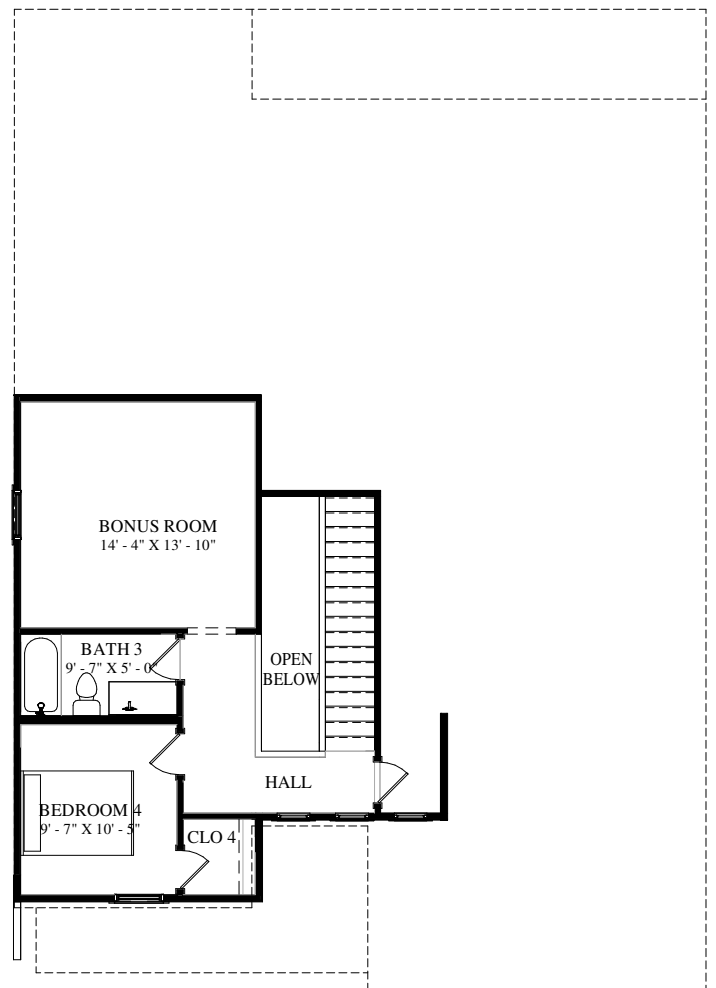
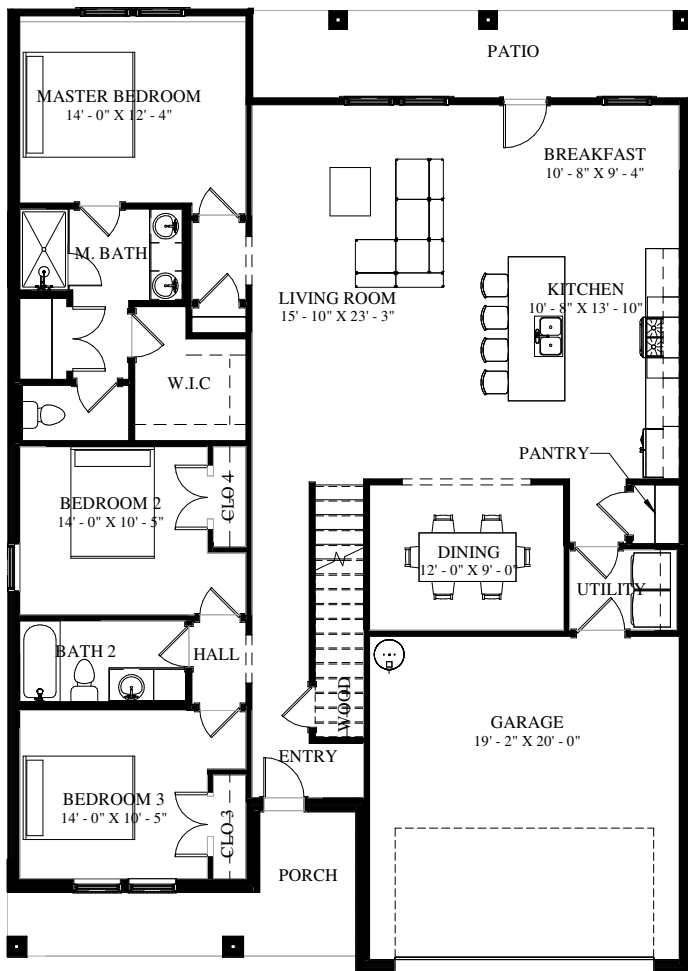
"Architectural dimensions shown are nominal exterior dimensions, room sizes, window placements and other dimensions may vary from these drawings. This brochure is for illustration purposes only. They are not part of a legal contract. Bilmar Homes reserves the right to change product, features, brand names, architectural design and details without notice."

5 BEDROOM - 2 BATH - 2 CAR GARAGE

PLAN: 2250 C



FRONT ELEVATION - PLAN 2250 C+



FLOOR PLAN

FOOTAGE:

TOTAL LIVING:	2250	SQ/FT
GARAGE:	405	SQ/FT
PORCHES:	264	SQ/FT
TOTAL COVERED:	2919	SQ/FT

WIDTH: 42' - 5"
DEPTH: 59' - 6 1/2"



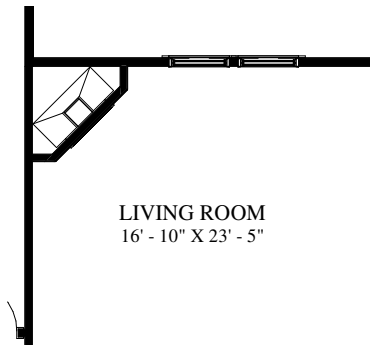
"Architectural dimensions shown are nominal exterior dimensions, room sizes, window placements and other dimensions may vary from these drawings. This brochure is for illustration purposes only. They are not part of a legal contract. Bilmar Homes reserves the right to change product, features, brand names, architectural design and details without notice."

5 BEDROOM - 2 BATH - 2 CAR GARAGE

PLAN: 2250 C+

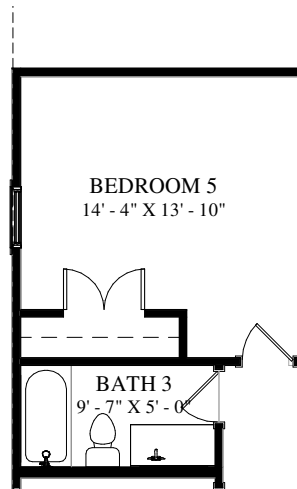


FRONT ELEVATION - PLAN 2250 C+



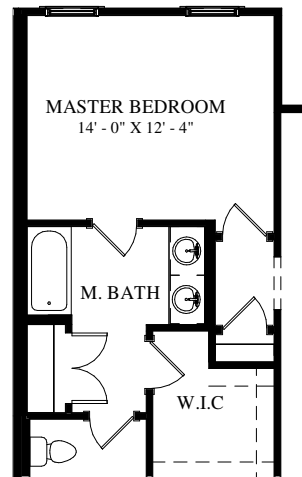
LIVING ROOM
16' - 10" X 23' - 5"

FAMILY ROOM
WITH
FIREPLACE



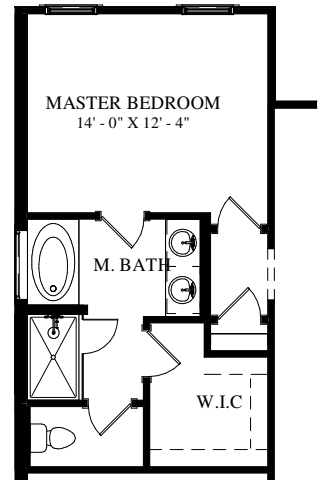
BEDROOM 5
14' - 4" X 13' - 10"

BEDROOM 5
OPTION



MASTER BEDROOM
14' - 0" X 12' - 4"

MASTER BATH
WITH TUB/
SHOWER
COMBO



MASTER BEDROOM
14' - 0" X 12' - 4"

MASTER BATH
WITH
GARDEN TUB
AND SHOWER

OPTIONS

FOOTAGE:

TOTAL LIVING:	2250	SQ/FT
GARAGE:	405	SQ/FT
PORCHES:	264	SQ/FT
TOTAL COVERED:	2919	SQ/FT

WIDTH: 42' - 5"
DEPTH: 59' - 6 1/2"



"Architectural dimensions shown are nominal exterior dimensions, room sizes, window placements and other dimensions may vary from these drawings. This brochure is for illustration purposes only. They are not part of a legal contract. Bilmar Homes reserves the right to change product, features, brand names, architectural design and details without notice."

5 BEDROOM - 2 BATH - 2 CAR GARAGE

PLAN: 2250 C+